

The game we're playing together... our purpose

To create the successful global citizens of tomorrow...



How we plan to win together...

We care about learning, each other and our school



Working Together
I discuss and share ideas with others to help us both improve our knowledge.

Creativity
I actively use my imagination and try different approaches to solve a problem and record my thinking.

Ambition
I have a Growth Mindset and can push myself to reach my full potential – even if it's hard and I have to be resilient.

WE CARE
about each other, learning and our school.

Empathy
I listen and try to understand the feelings of others.

Enquiry
I ask questions, contribute and get involved with the learning.

Reflection
I listen to advice and use feedback to help improve my learning.

Listening to Others

Being helpful

Being kind

Sharing our resources and talents

Being honest

Attenborough School

Live our WE CARE values and learning skills – Safeguarding and including all

Provide opportunities for all to develop their talents and explore personal interests

Facilitate thinking and learning through an inspiring curriculum based on our six Global Citizenship Drivers



Commitment to Excellence

Support learners to impact positively within our school and in the wider community

Teach Mathematics in a progressive and consistent manner to allow all to apply their knowledge, concepts and procedures to solve problems

Create engaged, fluent readers who can make meaning of a range of texts.

Develop capable writers and communicators



School Improvement Priorities 2022-23

To empower leaders in the school, including the SGC, to systematically evaluate our impact in enabling all children to achieve the aims of the curriculum.

Steps to success:

- Design and implement an annual monitoring schedule for all subject leaders.
- Ensure all SGC members understand their role and can carry out their duties effectively.
- Report termly pupil attainment in relation to progressive objectives set out for Global Citizenship and foundation subjects.

To refine our assessment system for tracking progress and attainment, following the implementation of revised schemes, to ensure that teaching and learning is effective across the school.

Steps to success:

- Deliver and embed highly effective schemes of learning in phonics, handwriting and mathematics across all phases.
- Track achievement of taught Phonics and mathematics in all phases.
- Review and revise assessment opportunities for Science and Foundation subjects across Y1 - Y6 in line with national programme of study

To enhance the opportunities for children to develop their talents, interests and to make a positive contribution to life beyond our school.

Steps to success:

- Explore and enable opportunities for pupils to make a positive contribution to life beyond our school.
- Enhance opportunities for pupils to develop their talents and interests through our House System.
- Develop extra-curricular opportunities for pupils to develop their talents and interest

12 Core Values of a Global Citizen

Appreciation

Co-operation

Tolerance

Humility

Respect

Thoughtfulness

Honesty

Unity

Trust

Responsibility

Courage

Happiness



Character over outcome = Success

WE CARE about each other

Listening to Others

Being helpful

Being honest

Being kind



Sharing our resources,
time and talents

“Nobody is too important to be nice to others”

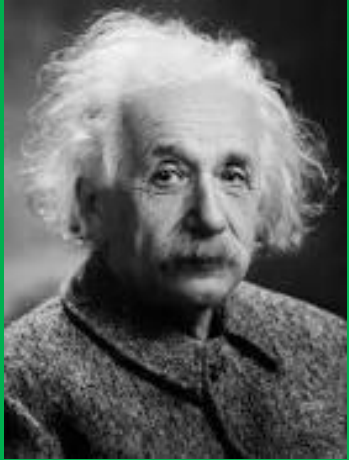
House Captains

“Motivate others through encouragement and inspiration”



- *Being positive about yourself and our school*
- *Embrace your weaknesses and work harder to improve*
 - *Encourage others– never criticise*
 - *Help others to improve*
 - *Enjoy your team’s success and try to win*
- *Consider the feelings of those in other teams also*

“You only become a leader when others follow...”



Einstein House

Albert Einstein is inspirational to us because of his mathematical brilliance, scientific thinking and ideas. He encourages us to 'stick at' complex problems when solving them with others or ourselves. He also showed us the importance of thinking critically and testing whether our theories and ideas are correct.



Thunberg House

Greta Thunberg is inspirational to us because of her bravery to challenge others to seek the truth and environmental improvement. She works with others demonstrating passion to secure a safe and sustainable planet for our future.



Rowling House

J.K Rowling is inspirational to us because of her creativity when writing. Her characters and stories inspire us to write our own ideas with confidence. She also showed impressive determination to achieve success.



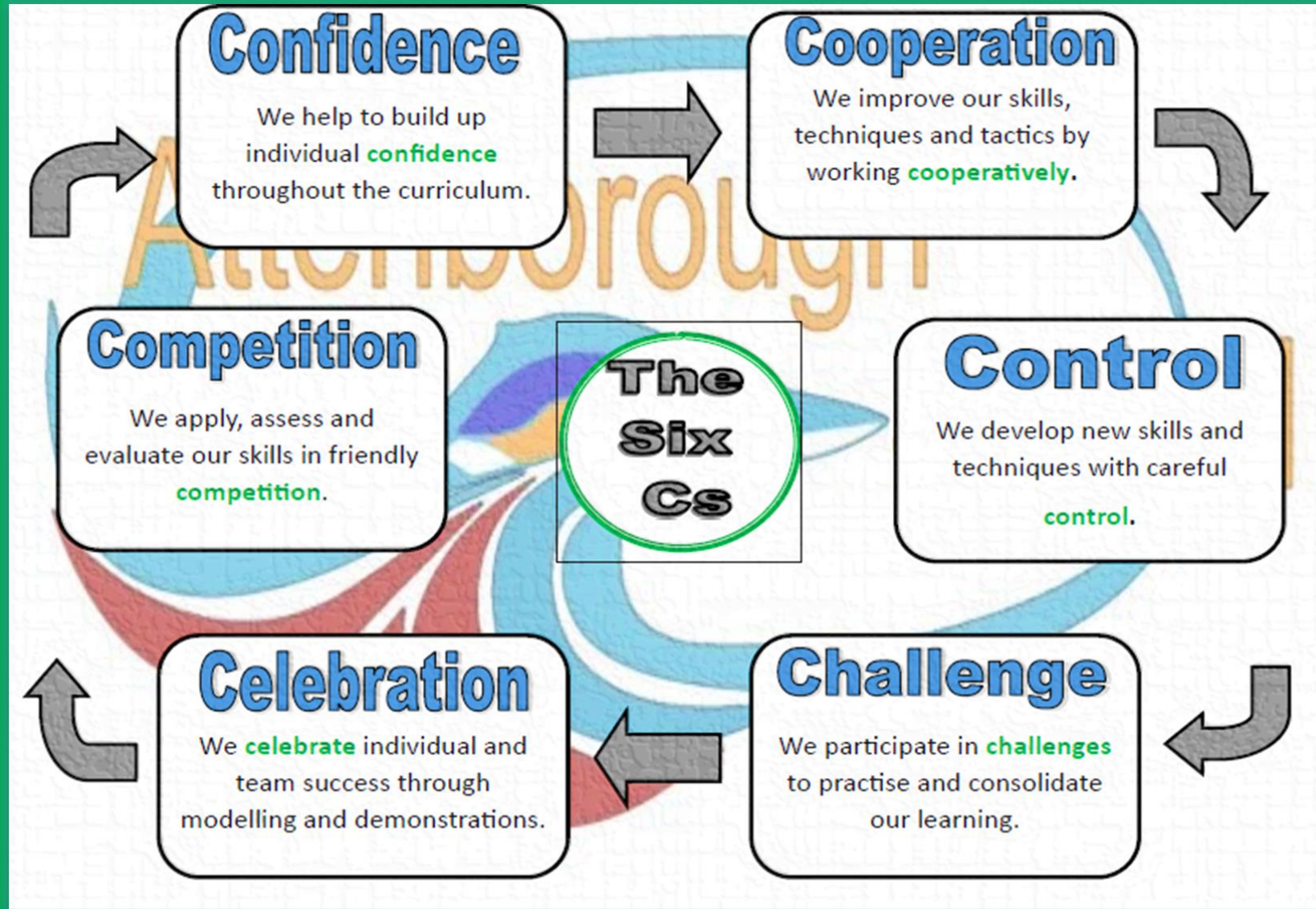
Frank House

Anne Frank is inspirational to us because of her ambition and resilience when facing great resistance and hardship. She inspires us to think of others, showing care and tolerance in difficult situations.



Physical Education

Head
Heart
Hands



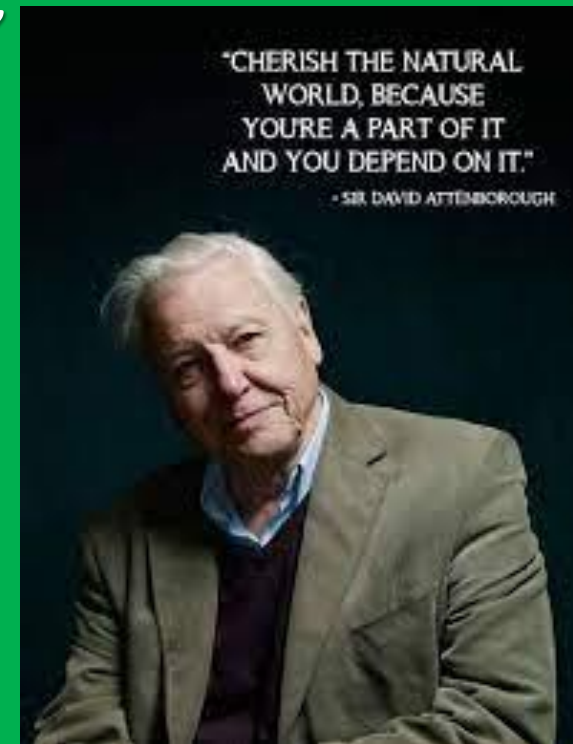
Nurturing Nature...time for us to act and influence others

#caringchangemakers

Sir David Attenborough

"It's surely our responsibility to do everything within our power to create a planet that provides a home not just for us, but for all life on Earth."

WE CARE about each other, learning and our school.





Young Leaders



Risk-takers



Team Players



Critical thinkers



Problem-solvers



Achievers



Friends



Negotiators



Change-makers



Creative thinkers



Caring about each other and our school

Dining Hall Expectations (1200-1230hrs)

We line-up quietly

We walk in our dining hall

We finish what we are eating before we speak

We remember to say 'please' and 'thank you'

We put our left-overs and food containers away in the bins

We remember to clear our table of all items (cups and cutlery)

We talk quietly to the people on our table

We eat with good table manners and try new foods

Dining Hall Expectations (agreed with children and colleagues 17.10.22)



Caring about each other and our school

Playground Safety Expectations

If playing sport, keep within the set boundaries.

Agree on a designated place for coats, water bottles and other items that are removed outside during break and lunch.

Use all equipment for its designed purpose.

Equipment is tidied and cared for. We tidy away items we have finished playing with.

If using scooters or bikes, be careful of other playground users and stay within the set area marked by cones.

Stay on the ground – only climb on equipment designed for climbing.

Always get permission before going inside.

Wait until an adult is on duty before going outside.

Playground Safety expectations (agreed with children, colleagues 17.10.22)

Follow our learning at...



@AttenboroughSc1



www.attenborough.school